

LCD 控制器&驅動器

ROHS 測試報告

產品名稱 : RA8870、RA0086、RA8806、RA8835、RA8835A、
RA6963、RA8802、RA8820、RA8803、RA8822

委託之檢測單位 : 台灣電子檢驗中心
台灣桃園縣龜山鄉樂善村文明路29巷8號

檢測日期 : 西元 2010 年 3 月 4 日

製造公司名稱 : 瑞佑科技股份有限公司
台灣新竹科學工業園區工業東四路 19-1 號 7 樓
TEL : 886-3-5637888 FAX : 886-3-5637666





33383 桃園縣龜山鄉樂善村文明路 29 巷 8 號 • 03-328-0026 • www.etc.org.tw

No. 8, Lane 29, Wen-Ming Rd., Kui-Shan, Taoyuan County, Taiwan 33383 • 03-328-0026 • www.etc.org.tw

測試報告/ Test Report

工服編號/ Application No 10-03-QAC-033

承辦日期/ Date of Receipt 2010/03/03

測試日期/ Date of Performance 2010/03/04

報告日期/ Date of Issue 2010/03/10

委託機構/ Manufacturer 瑞佑科技股份有限公司

RAIO TECHNOLOGY INC.

地址/ Address

新竹科學園區工業東四路 19-1 號 7F

7F, No.19-1, Industry East 4th Road, Hsinchu Science Park, Hsinchu, Taiwan, ROC

樣品名稱/ Sample Description LCD 控制器 & 驅動器/LCD Controller & Driver

樣品型號/ Model No.

RA8870L4N 、 RA0086L3N 、 RA8806L2N 、 RA8806T1N 、 RA8835P3N 、
RA8835AP3N 、 RA8835P4N 、 RA8835AP4N 、 RA6963L2N 、 RA8802P1N
RA8820P1N 、 RA8803P1N 、 RA8822P1N

測試內容/ Report Content

A. 樣品敘述與測試結果/ Sample Information & Results

B. 樣品圖片/ Sample Photo

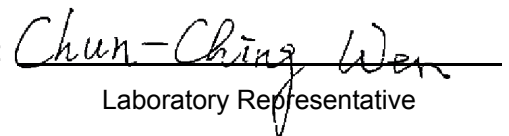
C. 流程圖/ Flow Chart

1. 送測樣品及其相關訊息均由客戶提供並已經由客戶確認無誤。/ Any sample(s) and its information listed in this document are provided and identified by clients.

2. 本報告僅對測試樣品負責。/ This report only refers to the specimen(s); it does not imply the result of production to tested sample(s).

3. 非經本中心同意，本報告內容不得以任何方式摘錄複印使用。(全部複印除外)。/ This Test Report cannot be reproduced, except in full, without prior written permission of the laboratory.

報告簽署人/ Approved by:


Laboratory Representative

The content of this PDF file is in accordance with its original issued Test Report. PDF files are for reference only.

33383 桃園縣龜山鄉樂善村文明路 29 巷 8 號 • 03-328-0026 • www.etc.org.tw

No. 8, Lane 29, Wen-Ming Rd., Kui-Shan, Taoyuan County, Taiwan 33383 • 03-328-0026 • www.etc.org.tw

A 樣品敘述/ Sample Information

NO.1

樣品編號/ Sample No. 10-03-QAC-033

樣品名稱/ Sample Description LCD 控制器 & 驅動器/LCD Controller & Driver

樣品型號/ Model No. RA8870L4N 、 RA0086L3N 、 RA8806L2N 、 RA8806T1N 、 RA8835P3N 、
RA8835AP3N 、 RA8835P4N 、 RA8835AP4N 、 RA6963L2N 、 RA8802P1N
RA8820P1N 、 RA8803P1N 、 RA8822P1N

測試結果/ Test Results

測試項目 Test Item(s)	儀器設備 Instruments	參考測試方法 Reference Method	測試結果/ Test Results (單位/ Unit : ppm)	
			NO.1	方法偵測極限 MDL
鉛/ Pb (CAS NO.7439-92-1)	ICP-OES	IEC 62321 Ed1: 2008 Totally Dissolved	N.D.	2.0
鎘/ Cd (CAS NO.7440-43-9)	ICP-OES	IEC 62321 Ed1: 2008 Totally Dissolved	N.D.	2.0
汞/ Hg (CAS NO.7439-97-6)	ICP-OES	IEC 62321 Ed1: 2008 Totally Dissolved	N.D.	2.0
六價鉻/ Cr ⁶⁺ (CAS NO.1333-82-0)	UV-VIS	IEC 62321 Ed1: 2008 Annex C	N.D.	2.0
多溴聯苯/ PBBs (CAS NO.059536-65-1)				
Monobromobiphenyl	GC-MS	IEC 62321 Ed1: 2008	N.D.	5.0
Dibromobiphenyl	GC-MS	IEC 62321 Ed1: 2008	N.D.	5.0
Tribromobiphenyl	GC-MS	IEC 62321 Ed1: 2008	N.D.	5.0
Tetrabromobiphenyl	GC-MS	IEC 62321 Ed1: 2008	N.D.	5.0
Pentabromobiphenyl	GC-MS	IEC 62321 Ed1: 2008	N.D.	5.0

The content of this PDF file is in accordance with its original issued Test Report. PDF files are for reference only.

33383 桃園縣龜山鄉樂善村文明路 29 巷 8 號 • 03-328-0026 • www.etc.org.tw

No. 8, Lane 29, Wen-Ming Rd., Kui-Shan, Taoyuan County, Taiwan 33383 • 03-328-0026 • www.etc.org.tw

Hexabromobiphenyl	GC-MS	IEC 62321 Ed1: 2008	N.D.	5.0
Heptabromobiphenyl	GC-MS	IEC 62321 Ed1: 2008	N.D.	5.0
Octabromobiphenyl	GC-MS	IEC 62321 Ed1: 2008	N.D.	5.0
Nonabromobiphenyl	GC-MS	IEC 62321 Ed1: 2008	N.D.	5.0
Decabromobiphenyl	GC-MS	IEC 62321 Ed1: 2008	N.D.	5.0
多溴聯苯醚/ PBDEs (CAS NO.1163-19-5)				
Monobromodiphenyl ether	GC-MS	IEC 62321 Ed1: 2008	N.D.	5.0
Dibromodiphenyl ether	GC-MS	IEC 62321 Ed1: 2008	N.D.	5.0
Tribromodiphenyl ether	GC-MS	IEC 62321 Ed1: 2008	N.D.	5.0
Tetrabromodiphenyl ether	GC-MS	IEC 62321 Ed1: 2008	N.D.	5.0
Pentabromodiphenyl ether	GC-MS	IEC 62321 Ed1: 2008	N.D.	5.0
Hexabromodiphenyl ether	GC-MS	IEC 62321 Ed1: 2008	N.D.	5.0
Heptabromodiphenyl ether	GC-MS	IEC 62321 Ed1: 2008	N.D.	5.0
Octabromodiphenyl ether	GC-MS	IEC 62321 Ed1: 2008	N.D.	5.0
Nonabromodiphenyl ether	GC-MS	IEC 62321 Ed1: 2008	N.D.	5.0
Decabromodiphenyl ether	GC-MS	IEC 62321 Ed1: 2008	N.D.	5.0

The content of this PDF file is in accordance with its original issued Test Report. PDF files are for reference only.



33383 桃園縣龜山鄉樂善村文明路 29 巷 8 號 • 03-328-0026 • www.etc.org.tw

No. 8, Lane 29, Wen-Ming Rd., Kui-Shan, Taoyuan County, Taiwan 33383 • 03-328-0026 • www.etc.org.tw

備註/ Note :

1. N.D. : 即為偵測不到/ Not Detected.
2. MDL : 方法偵測極限/ Method Detection Limitation.
3. ppm : = mg/kg (0.1% = 1000 ppm)
4. 測試儀器中英文對照/ Sino-British Contrast of the instrument
 - a. ICP-OES 感應耦合電漿原子發射光譜儀
 - b. UV-VIS 分光光度計
 - c. GC-MS 氣相層析質譜儀
5. 測試人員/ Tested by : Ellen 、 ZIV
6. 檢閱人員/ Reviewed by : sujane

The content of this PDF file is in accordance with its original issued Test Report. PDF files are for reference only.

33383 桃園縣龜山鄉樂善村文明路 29 巷 8 號 ● 03-328-0026 ● www.etc.org.tw

No. 8, Lane 29, Wen-Ming Rd., Kui-Shan, Taoyuan County, Taiwan 33383 ● 03-328-0026 ● www.etc.org.tw

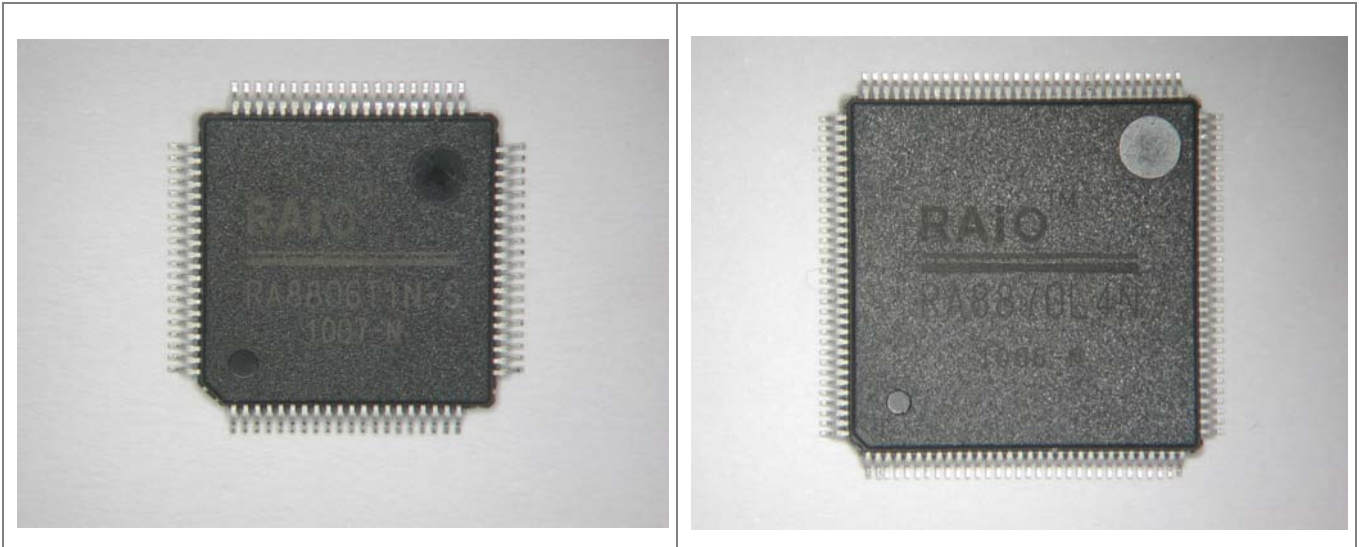
B. 樣品照片 / Sample Photo



The content of this PDF file is in accordance with its original issued Test Report. PDF files are for reference only.

33383 桃園縣龜山鄉樂善村文明路 29 巷 8 號 ● 03-328-0026 ● www.etc.org.tw

No. 8, Lane 29, Wen-Ming Rd., Kui-Shan, Taoyuan County, Taiwan 33383 ● 03-328-0026 ● www.etc.org.tw

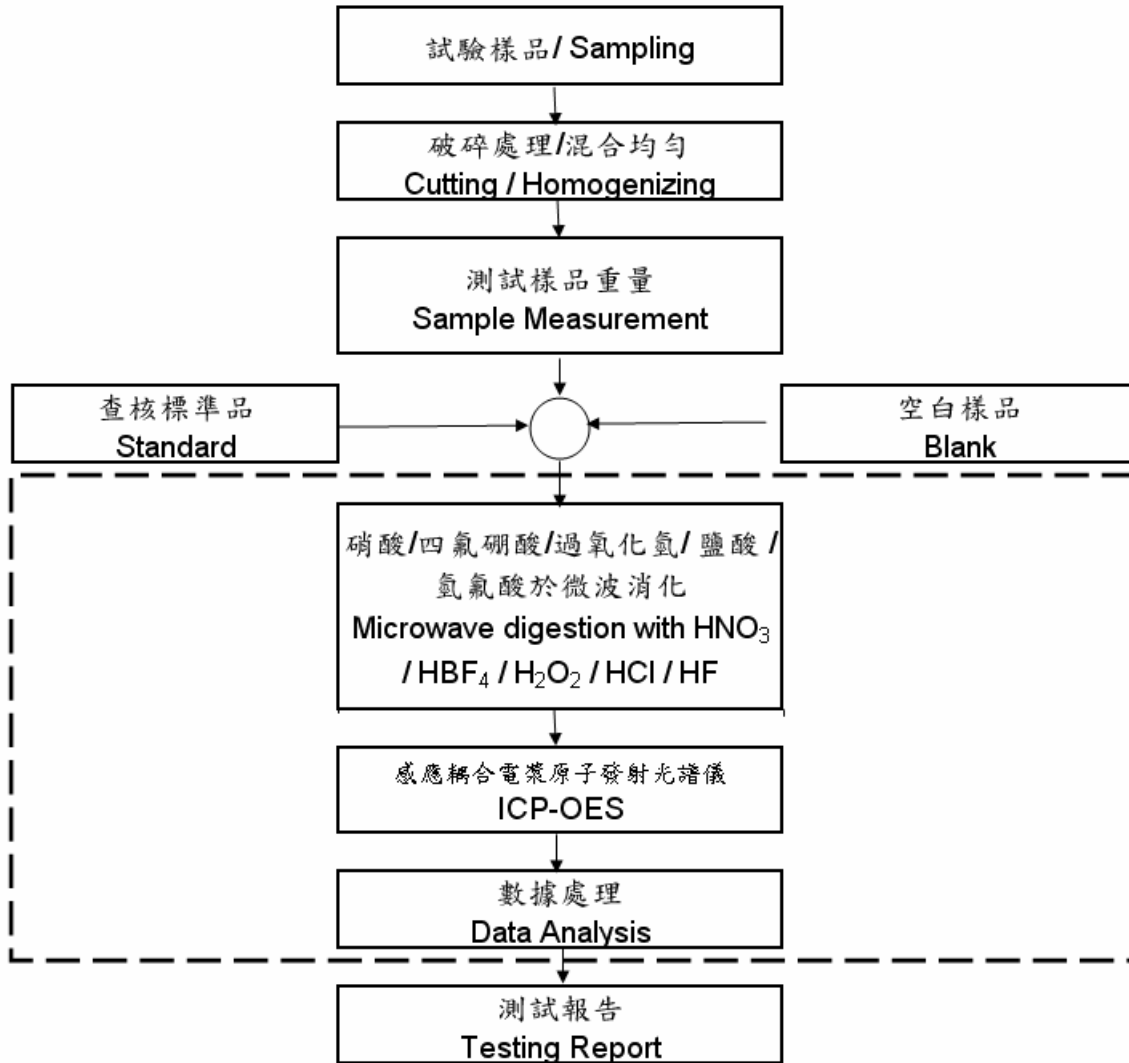


測試部位：八個樣品混合測試

33383 桃園縣龜山鄉樂善村文明路 29 巷 8 號 • 03-328-0026 • www.etc.org.tw

No. 8, Lane 29, Wen-Ming Rd., Kui-Shan, Taoyuan County, Taiwan 33383 • 03-328-0026 • www.etc.org.tw

C. 流程圖/ Flow Chart

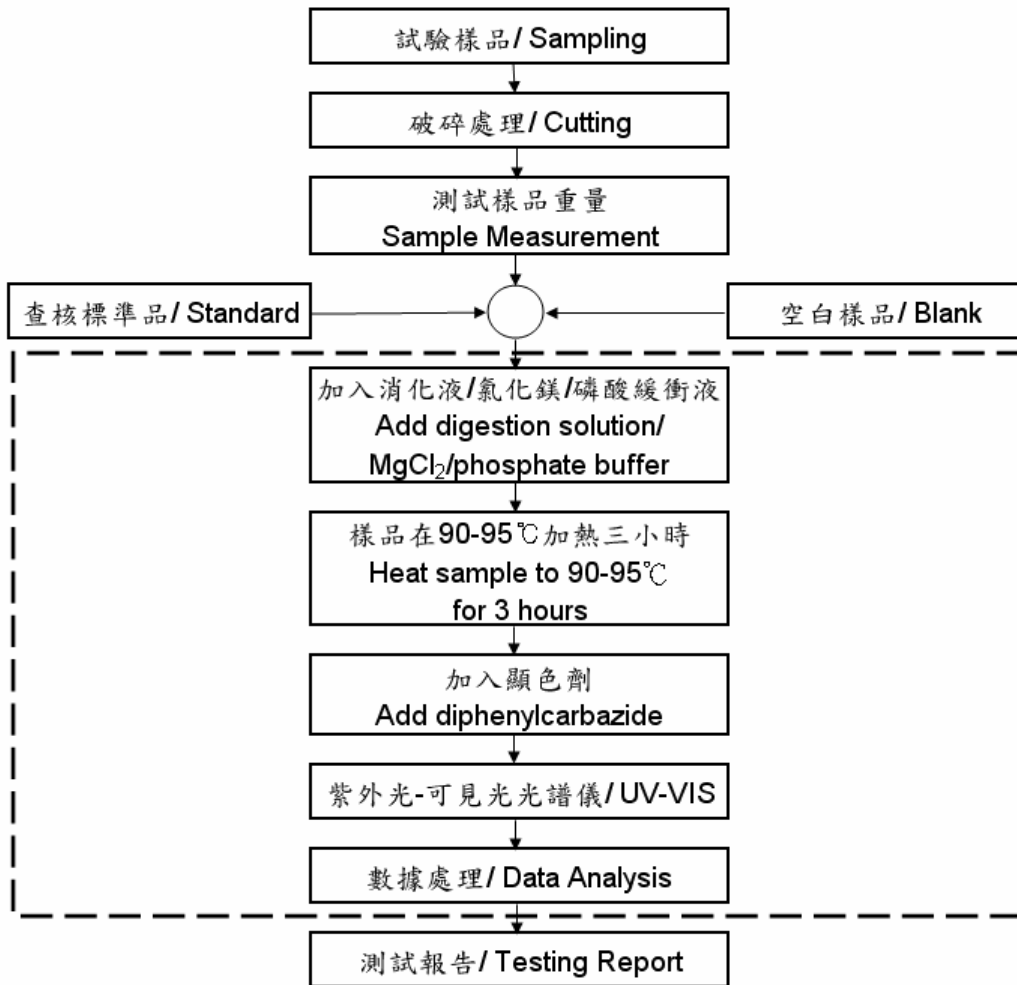


Flow Chart of Digestion-IEC 62321 for Pb、Cd、Hg (完全溶解/ Totally Dissolved)

The content of this PDF file is in accordance with its original issued Test Report. PDF files are for reference only.

33383 桃園縣龜山鄉樂善村文明路 29 巷 8 號 • 03-328-0026 • www.etc.org.tw

No. 8, Lane 29, Wen-Ming Rd., Kui-Shan, Taoyuan County, Taiwan 33383 • 03-328-0026 • www.etc.org.tw

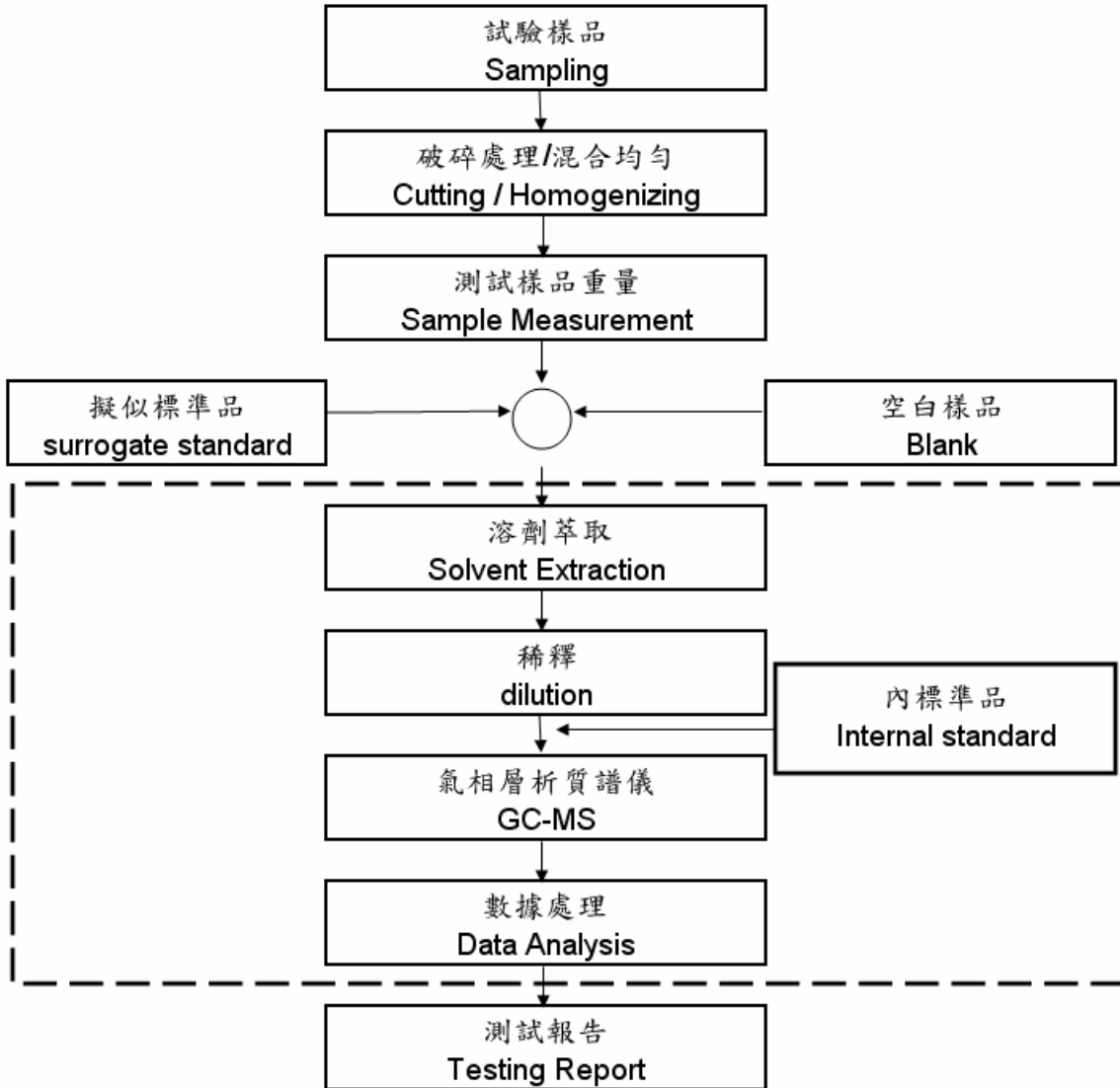


Flow Chart of Extraction-IEC 62321 for Cr⁶⁺

The content of this PDF file is in accordance with its original issued Test Report. PDF files are for reference only.

33383 桃園縣龜山鄉樂善村文明路 29 巷 8 號 • 03-328-0026 • www.etc.org.tw

No. 8, Lane 29, Wen-Ming Rd., Kui-Shan, Taoyuan County, Taiwan 33383 • 03-328-0026 • www.etc.org.tw



Flow Chart of Extraction-IEC 62321 for PBB、PBDE

---報告結尾/ End of Report ---